

TABLE 1					
PART #	CABLE	END 1	END 2	"B"	SUB-SCRX PART #
SCR2-17-32-X-XX-XX-DK	DWC-24-10-300	C-198-2024-01-X	C-179-03-X	19.18 [.755]	SUB-SCRX-17-01
SCR2-17-32-X-XX-XX-D	DWC-24-10-300	C-198-2024-01-X	C-179-03-X	19.18 [.755]	SUB-SCRX-17-01
SCR2-17-32-X-XX-XX-MK	DWC-24-10-300	C-198-2024-01-X	C-179-03-X	19.18 [.755]	SUB-SCRX-17-01
SCR2-17-32-X-XX-XX-BC	DWC-24-10-300	C-198-2024-01-X	NA	11.98 [.472]	SUB-SCRX-17-01
SCR2-17-32-X-XX-XX-S-S1	DWC-24-10-300	C-198-2024-01-X	C-179-03-X	19.18 [.755]	SUB-SCRX-17-01
SCR2-17-32-X-XX-XX-S-S2	DWC-24-10-300	C-198-2024-01-X	C-179-03-X	19.18 [.755]	SUB-SCRX-17-01
SCR2-17-32-X-XX-XX-S-BC	DWC-24-10-300	C-198-2024-01-X	NA	11.98 [.472]	SUB-SCRX-17-01
SCR2-17-32-X-XX-XX-T-S1	DWC-24-10-300	T-1R31-2024-01-X	C-179-03-X	19.18 [.755]	SUB-SCRX-17-03
SCR2-17-32-X-XX-XX-T-S2	DWC-24-10-300	T-1R31-2024-01-X	C-179-03-X	19.18 [.755]	SUB-SCRX-17-03
SCR2-17-32-X-XX-XX-T-BC	DWC-24-10-300	T-1R31-2024-01-X	NA	11.98 [.472]	SUB-SCRX-17-03

DESIGNED & DIMENSIONED
IN MILLIMETERS [INCHES]

SCR2-17-XX-X-XX.XX-XX-XX

POSITIONS
-32

PLATING
-S: SELECTIVE GOLD
-F: FLASH SELECTIVE GOLD

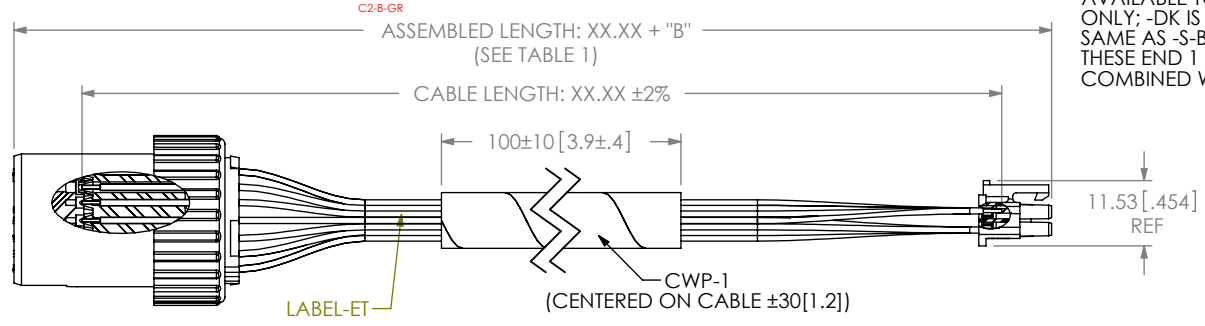
CABLE LENGTH*
-XX.XX (IN METERS)
00.25[9.84] MIN - 01.00[25.40] MAX

END 2 OPTION
-S1: SOCKET BODY PLASTIC LATCH
-S2: SOCKET BODY METAL LATCH
-BC: BLUNT CUT

END 1 OPTION
-S: SOCKET
-T: TERMINAL
-D: DOUBLE ENDED
-BC: BLUNT CUT
-DK: DOUBLE ENDED KEYED POLARIZATION
-MK: DOUBLE ENDED KEYED METAL LATCH

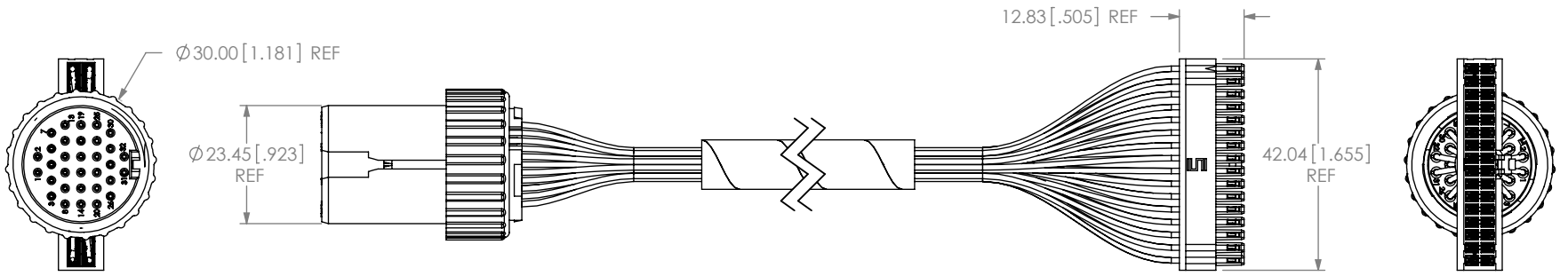
*-00.25, -00.50, AND -01.00 ARE CATALOG STANDARD LENGTHS. FOR OTHER LENGTHS CONTACT SAMTEC.
** -D OPTION, DO NOT DESIGN IN. SAMTEC WILL ONLY SUPPORT EXISTING BUSINESS AS OF REV D

FIG. 1
SCR2-17-32-X-XX.XX-S-S1 SHOWN



**** AVAILABLE TO EXISTING CUSTOMERS ONLY; -DK IS SAME AS -S-S1. -BC IS SAME AS -S-BC. -MK IS SAME AS -S-S2. THESE END 1 OPTIONS CANNOT BE COMBINED WITH END2 OPTIONS

DO NOT
SCALE FROM
THIS PRINT



- NOTES:
1. **cx.xx.xx** REPRESENTS A CRITICAL DIMENSION.
 2. NOTE MOVED.
 3. NOTE DELETED.
 4. NOTE DELETED.
 5. WIRING TO BE POS 1 TO POS 1, POS 2 TO POS 2, POS 3 TO POS 3, ETC.
 6. ASSEMBLY TO BE 100% HI-POT TESTED AT 1000V DC AND ASSEMBLY TO BE 100% TESTED FOR OPENS AND SHORTS; AFTER IN-PROCESS 4 FOR -D AND IN-PROCESS 3 FOR -BC, THEN FINAL ASSEMBLY. AFTER FINAL ELECTRICAL TEST, LABEL EACH ASSEMBLY WITH 1 LABEL-ET.
 7. PANEL THICKNESS: 0.08[.03] - .52[.205].
 8. ASSEMBLY, INCLUDING SUB-SCRX-17-XX, TO BE SHIPPED IN SEAL-TOP BAGS, SEE FIG. 3, SHEET 2.
 9. MINIMUM RETENTION FORCE: 11N[2 LBS].
 10. TORQUE SPECIFICATION FOR NUT ON SUB-SCRX-17-XX IS 12 IN-LB.
 11. NOTE DELETED.
 12. NOTE DELETED.
 13. REFER TO CRIMP SPECIFICATIONS PRINT FOR CRIMP AND STRIP DIMENSIONS, TOLERANCES, AND TOOLING.
 14. FOR LENGTHS GREATER THAN 3.00 METERS, CONTACT SAMTEC FOR ELECTRICAL TEST DATA.
 15. NOTE DELETED.

UNLESS OTHERWISE SPECIFIED,
DIMENSIONS ARE IN MILLIMETERS.
TOLERANCES ARE:
DECIMALS ANGLES
.X: ±0.3 [.01] 2°
.XX: ±0.13 [.005]
.XXX: ±0.051 [.0020]

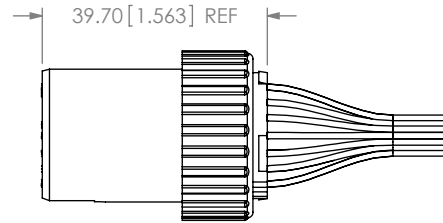
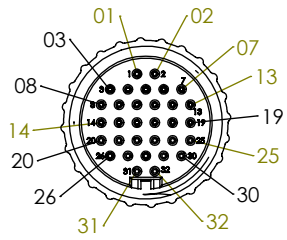
PROPRIETARY NOTE
THIS DOCUMENT CONTAINS INFORMATION CONFIDENTIAL AND PROPRIETARY TO SAMTEC, INC. AND SHALL NOT BE REPRODUCED OR TRANSFERRED TO OTHER DOCUMENTS OR DISCLOSED TO OTHERS OR USED FOR ANY PURPOSE OTHER THAN THAT WHICH IT WAS OBTAINED WITHOUT THE EXPRESSED WRITTEN CONSENT OF SAMTEC, INC.

samtec
520 PARK EAST BLVD, NEW ALBANY, IN 47150
PHONE: 812-944-6733 FAX: 812-948-5047
e-Mail: info@SAMTEC.com code: 55322

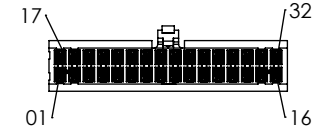
MATERIAL: DO NOT SCALE DRAWING SHEET SCALE: 1:1.33333
SUB-SCR2-17-32-01: PBT
IPD1-16-D-K: PBT
CONTACTS: PHOS BRONZE
SPN-17-02: PA66

DESCRIPTION:
UNSEALED CIRCULAR 24 AWG CABLE ASSEMBLY
DWG. NO.
SCR2-17-XX-X-XX.XX-XX-XX
BY: BRATCHER 09/28/2005 SHEET 1 OF 3

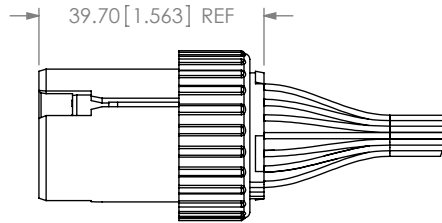
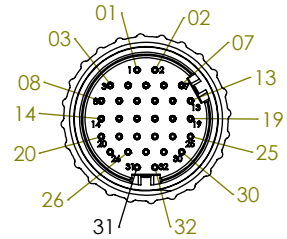
-S: SOCKET



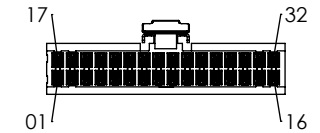
-S1: SOCKET BODY PLASTIC LATCH



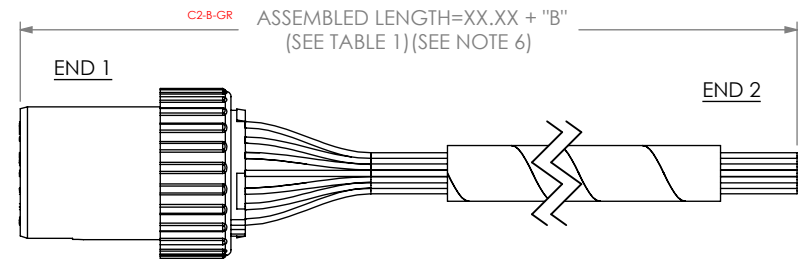
-T: TERMINAL



-S2: SOCKET BODY METAL LATCH



-BC: BLUNT CUT
(BUILD DOUBLE-ENDED INITIALLY FOR E-TEST)



PROPRIETARY NOTE
THIS DOCUMENT CONTAINS INFORMATION CONFIDENTIAL AND PROPRIETARY TO SAMTEC, INC. AND SHALL NOT BE REPRODUCED OR TRANSFERRED TO OTHER DOCUMENTS OR DISCLOSED TO OTHERS OR USED FOR ANY PURPOSE OTHER THAN THAT WHICH IT WAS OBTAINED WITHOUT THE EXPRESSED WRITTEN CONSENT OF SAMTEC, INC.

DO NOT SCALE DRAWING

SHEET SCALE: 0.75:1



520 PARK EAST BLVD, NEW ALBANY, IN 47150
PHONE: 812-944-6733 FAX: 812-948-5047
e-Mail: info@SAMTEC.com code: 55322

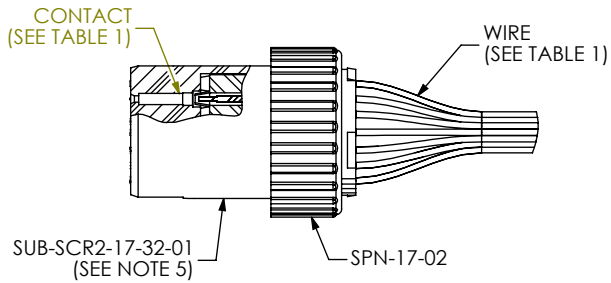
DESCRIPTION:
UNSEALED CIRCULAR 24 AWG CABLE ASSEMBLY

DWG. NO.
SCR2-17-XX-X-XX.XX-XX-XX

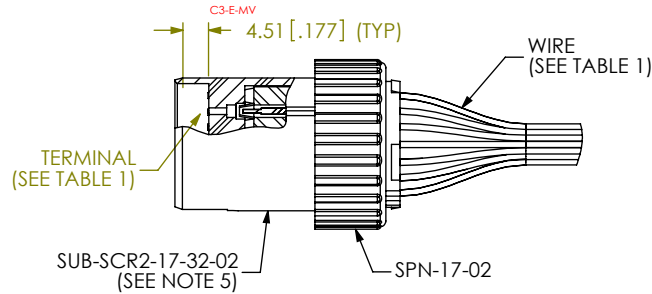
BY: BRATCHER 09/28/2005 SHEET 2 OF 3

REVISION V

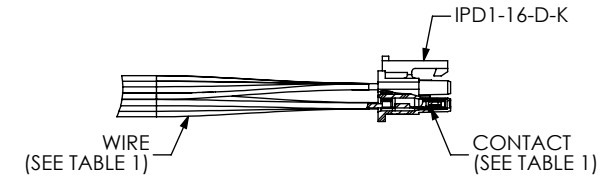
-S: SOCKET
(IN-PROCESS 1)



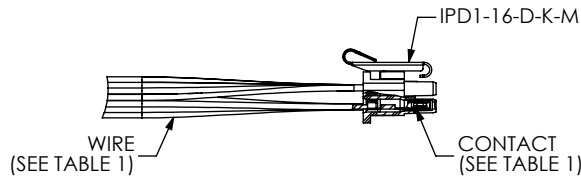
-T: TERMINAL
(IN-PROCESS 1)



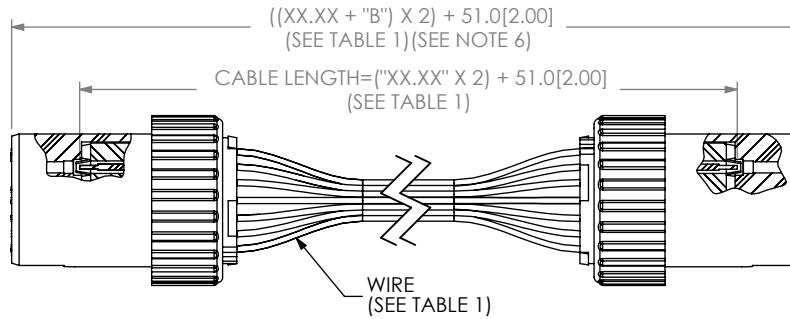
-S1: SOCKET BODY PLASTIC LATCH
(IN-PROCESS 1)



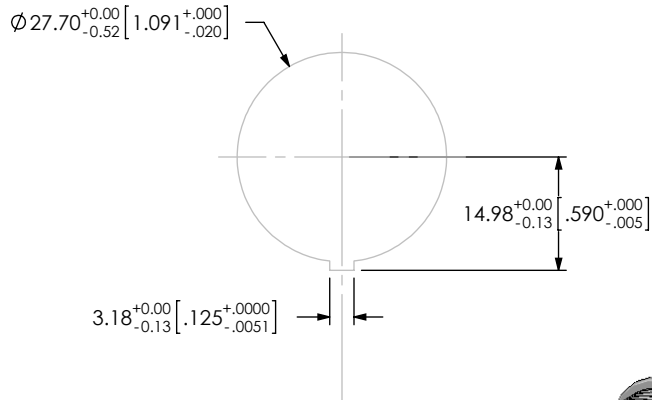
-S2: SOCKET BODY METAL LATCH
(IN-PROCESS 1)



-BC: BLUNT CUT
(IN-PROCESS 1)



RECOMMENDED PANEL HOLE
(SEE NOTE 7)



SUB-SCRX-17-XX
(SEE TABLE 1)
(PANEL MOUNT HARDWARE)

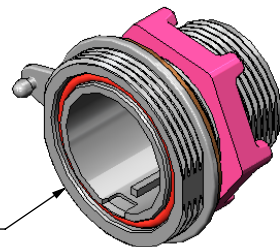
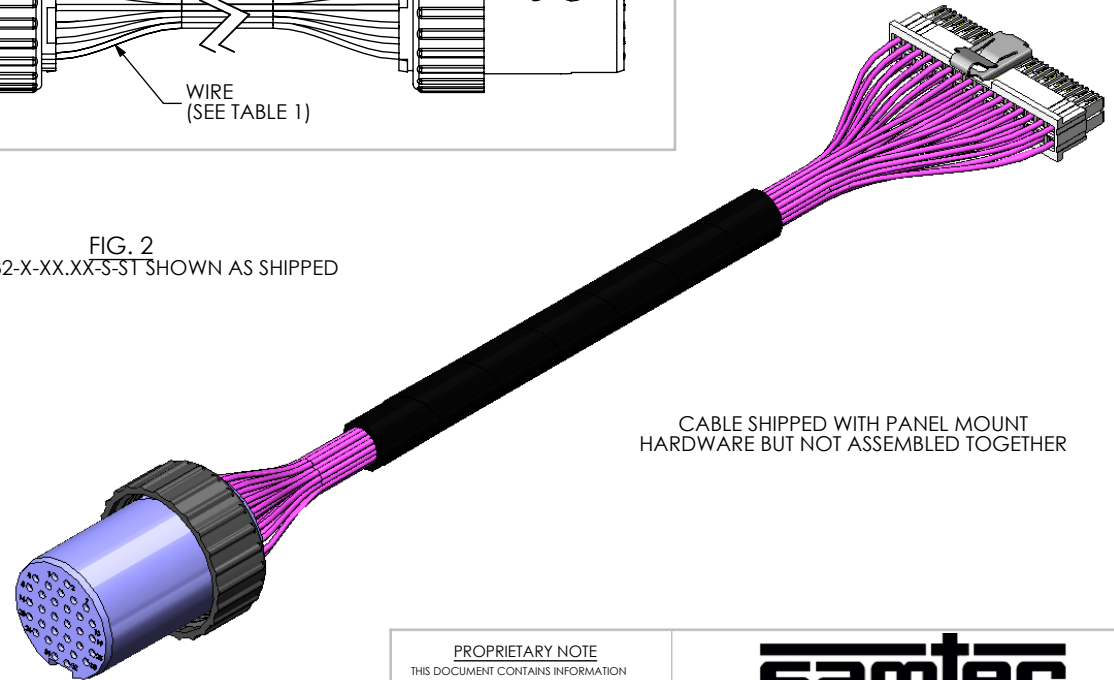


FIG. 2
SCR2-17-32-X-XX.XX-S-ST SHOWN AS SHIPPED



CABLE SHIPPED WITH PANEL MOUNT
HARDWARE BUT NOT ASSEMBLED TOGETHER

PROPRIETARY NOTE

THIS DOCUMENT CONTAINS INFORMATION CONFIDENTIAL AND PROPRIETARY TO SAMTEC, INC. AND SHALL NOT BE REPRODUCED OR TRANSFERRED TO OTHER DOCUMENTS OR DISCLOSED TO OTHERS OR USED FOR ANY PURPOSE OTHER THAN THAT WHICH IT WAS OBTAINED WITHOUT THE EXPRESSED WRITTEN CONSENT OF SAMTEC, INC.

DO NOT SCALE DRAWING

SHEET SCALE: 0.75:1



520 PARK EAST BLVD, NEW ALBANY, IN 47150
PHONE: 812-944-6733 FAX: 812-948-5047
e-Mail: info@SAMTEC.com code: 55322

DESCRIPTION:
UNSEALED CIRCULAR 24 AWG CABLE ASSEMBLY

DWG. NO.
SCR2-17-XX-X-XX.XX-XX-XX

BY: BRATCHER 09/28/2005 SHEET 3 OF 3